

2. SYSTEM REQUIREMENTS

The minimum and recommended system requirements to be able to run the Clinical Audit tool are provided in this section.

2.1. Operating System

Clinical Audit runs under the following environments;

Microsoft Windows VISTA
Microsoft Windows XP Professional
Microsoft Windows 2003 Server
Microsoft Windows 2003 R2 Server

2.2. Microsoft .NET Framework

PCS Clinical Audit requires the Microsoft .NET Framework version 2.0 to be installed prior to installing PCS Clinical Audit. This can be downloaded from

<http://www.microsoft.com/downloads/details.aspx?FamilyID=0856eacb-4362-4b0d-8edd-aab15c5e04f5&displaylang=en>

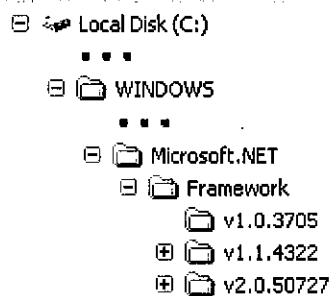
How to check which version of .NET you have installed:

Method 1:

Go to Start > Control Panel
Open 'Add or Remove Programs'
Check to see that 'Microsoft .NET Framework 2.0' appears in the list

Method 2:

Using windows explorer



Locate the
%systemroot%\Microsoft.NET\Framework
folder

[The %systemroot% is found under your
c:\ drive and will usually be named
'WINDOWS' or 'WINNT']

The versions that are installed will be
listed by folder.

2.3. Internet Explorer

To install PCS Clinical Audit you must use Internet Explorer version 5.5 or later. Clinical Audit can be installed by going to the following URL

<http://www.pencs.com.au/ClickOnce/ClinicalAudit/publish.htm>

2.4. Internet Connection

PCS Clinical Audit uses an authentication mechanism that requires a persistent internet connection. It is recommended that you have a broadband internet connection to operate PCS Clinical Audit.

2.5. Memory

Clinical Audit requires at least 196MB of available memory for a typical Clinical Desktop System (eg. Medical Director) installation¹. It is recommended that you use Clinical Audit on a system with at least 512MB of RAM installed.

2.6. Disk Space

The program itself is relatively small; however, each snapshot for a typical Clinical Desktop System (eg. Medical Director) installation¹ will require around 25MB of disk space.

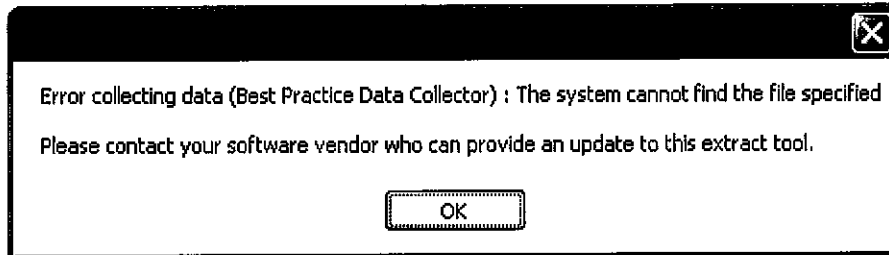
2.7. Clinical Desktop System Compatibility

- *Medical Director*
Clinical Audit has been tested against Medical Director Versions 2 and 3. As new versions of Medical Director are released, PCS Clinical Audit will be validated and, if required, updated to maintain compatibility.
- *Best Practice*
Clinical Audit is compatible with Best Practice version 1.6.0.395 and later. As new versions of Best Practice are released, PCS Clinical Audit will be validated and, if required, updated to maintain compatibility.
- *Genie*
Clinical Audit is compatible with Genie Version 7.5.3 and later. As new versions of Genie are released, PCS Clinical Audit will be validated and, if required, updated to maintain compatibility.

¹ For the purposes of this document a typical Medical Director installation contains approximately 10,000 patient records.

2.8. Best Practice Requirements

Best Practice Software provides a new executable file that must exist with your Best Practice application in order for Clinical Audit to be able to collect data. If this file is not installed you will receive the following error message when you click the Clinical Audit 'Collect' button.



If you receive this message contact Best Practice Software and they will provide a copy of the file for you. It is intended that this file will included in future releases of the application.

2.9. Genie Requirements

The Genie software application provides a new Reports menu option that performs the data extraction for Clinical Audit. This is described in the Appendices section of this manual.

3. INSTALLATION

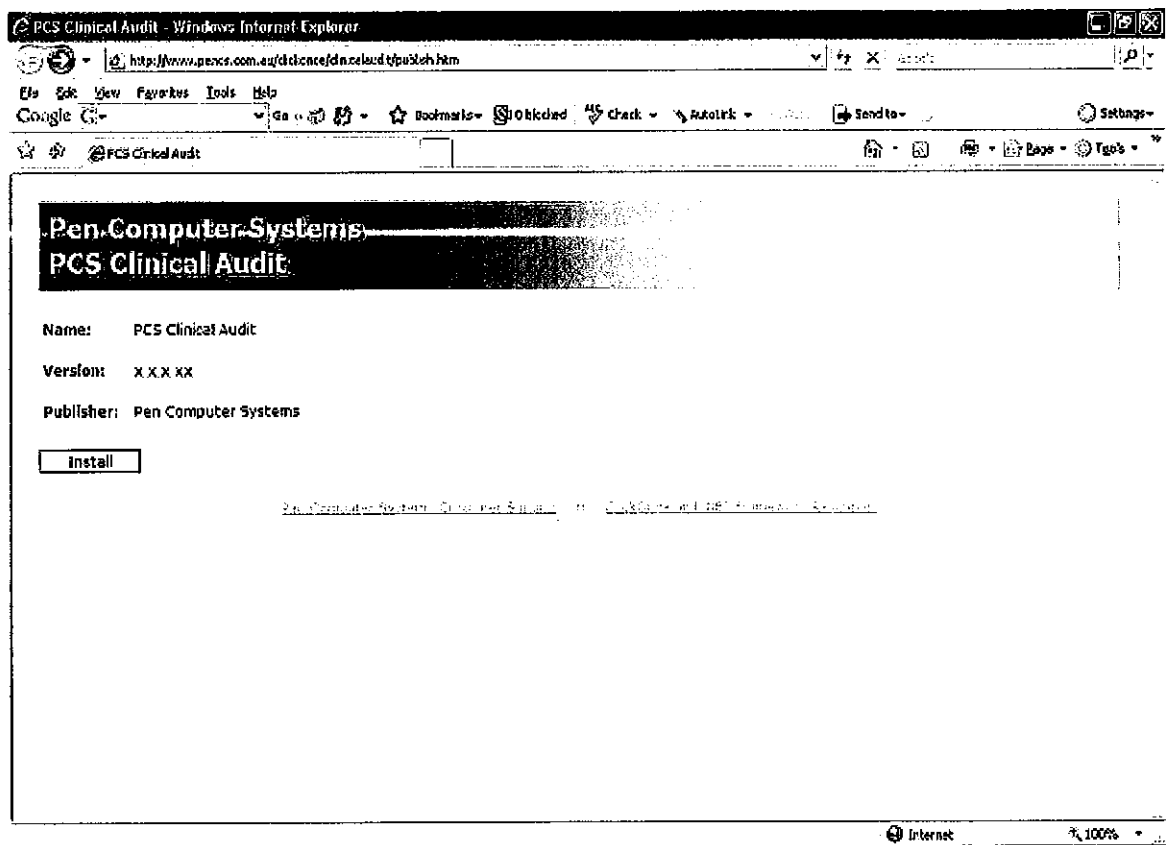
The Clinical Audit Tool is available using Microsoft ClickOnce technology.

Using **Internet Explorer** and go to the URL

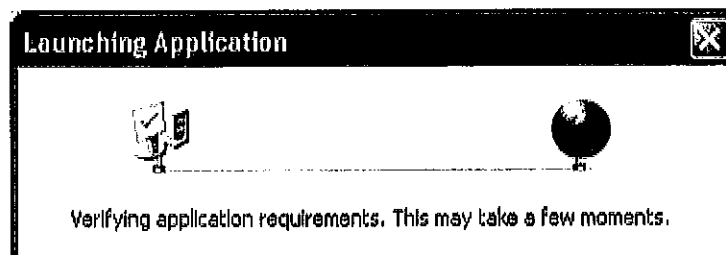
<http://www.pencs.com.au/clickonce/clinicalaudit/publish.htm>

Note: ClickOnce technology is not compatible with FireFox.

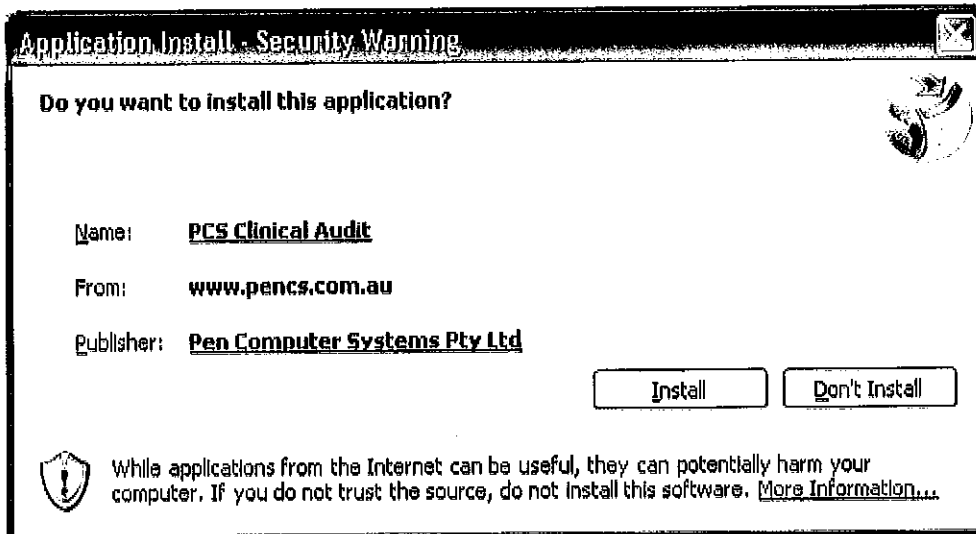
Click the 'Install' button



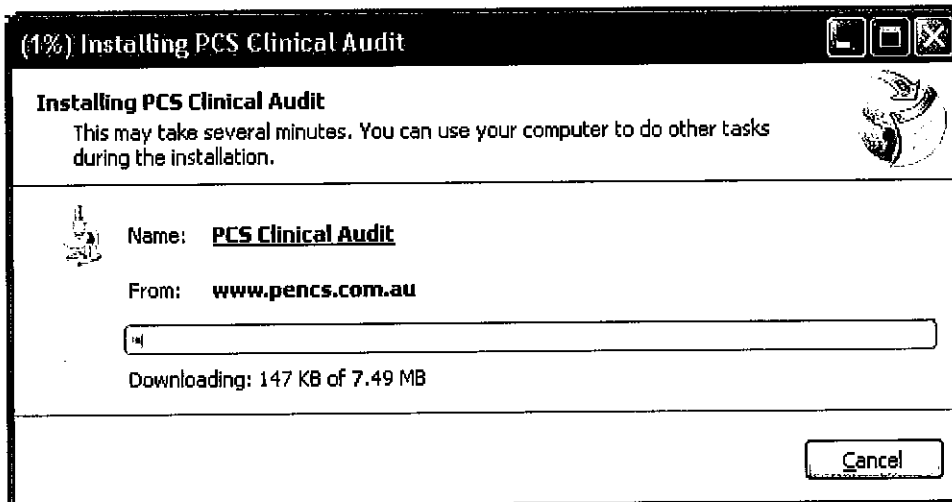
The application will be launched.



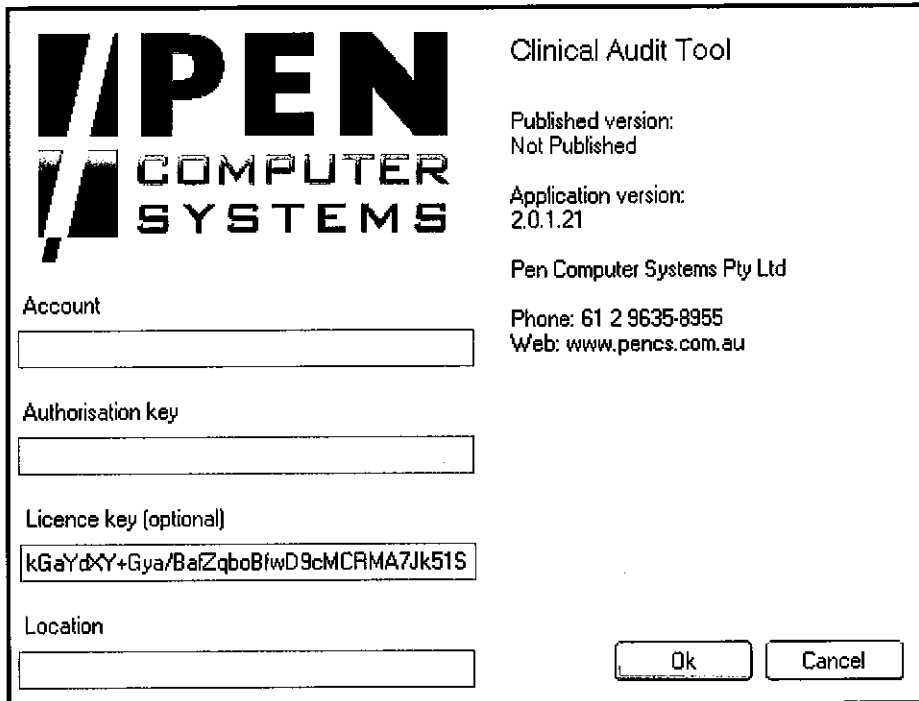
You will be provided with some security information about the application. Click the 'Install' button to continue with the install.



A dialog box will display showing you the progress of the install.



Once the install has completed the Clinical Audit Tool Login screen will appear.



PEN
COMPUTER
SYSTEMS

Clinical Audit Tool

Published version:
Not Published

Application version:
2.0.1.21

Pen Computer Systems Pty Ltd

Phone: 61 2 9635-8955
Web: www.pencs.com.au

Account

Authorisation key

Licence key (optional)

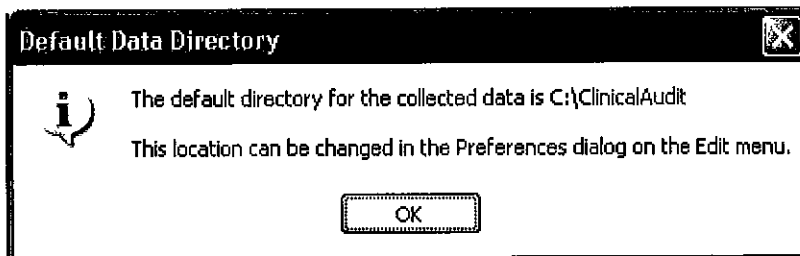
Location

Ok Cancel

Account name and Authorisation key – enter the details provided to you.
License Key – leave this empty unless you have been provided with a special key (a key will be automatically generated for you at first login)

Click 'Ok'

The first time you login the dialog box below will pop up.



This lets you know that the folder 'C:\ClinicalAudit' on your PC will be used to store the 'snap-shots' of your data for analysis by the Clinical Audit Tool. If you prefer to store them somewhere else you can change this by selecting Edit > Preferences from the top menu. Setting your preferences is explained in the next section: 'Setting Your Preferences'.

3.1. Installing to a Desktop PC

Clinical Audit needs to be installed under each profile (login) that will be using it on the PC. That is, if multiple people log on to the one PC and they each want to use Clinical Audit the installation needs to be repeated for each login. The application generally only installs once but 'activates' itself for the other logins on additional installs.

3.2. Installing to Terminal Services or Citrix

The only differences to the preceding installation instructions are the following:

1. Clinical Audit needs to be installed on the SERVER
 - Log on as the user via a Terminal Services or Citrix session and you will automatically be on the server. Follow the installation instructions in the preceding section.
2. Clinical Audit needs to be installed under each profile (login) that will be using it. That is, if multiple people will be using it, the installation needs to be repeated for each login. The application generally only installs once but 'activates' itself for the other logins on additional installs.
 - Log on as each user that will be using CAT and repeat the install instructions.

NOTE: If access privileges are an issue, then you will need to elevate the user's privileges to install and then restore them afterwards. This is a Microsoft configuration.

3.3. Proxy Servers

If you are having trouble installing the Clinical Audit Tool it may be because you are behind a Proxy Server. Some Proxy Servers will prevent you from installing the Clinical Audit Tool which uses a very new deployment technology developed by Microsoft.

When attempting to install one of the following may occur

- you get a message like "the application failed to install"
- you get a message indicating a "CGI error"
- you can't login even though you have the correct user name and password

These problems are most likely caused by your system's Proxy Server.

If you cannot install the Tool, please contact your Network Administrator or IT support person and advise them of this issue. There is a hot-fix supplied by Microsoft that may help in allowing installation to occur behind your Proxy Server.

The hot-fix can be downloaded here:

http://www.myhealthpractice.com.au/DOTNETHOTFIX_Proxy_KB917952.zip

If your Network Administrator or IT support contact is unable to help please contact your division.

Follow these steps

1. Logon to the computer you are installing CAT onto as Administrator
2. Download the zip file and extract the files
3. Run the extracted .exe file
4. Reboot the computer

3.4. Using Clinical Audit Offline

You must install and login initially to Clinical Audit while connected to the Internet so your login details can be validated.

You can then use CAT without being connected to the Internet for a period of 1 month.

When you are connected to the Internet CAT is able to verify your registration credentials are still valid and check to see if there are any application updates available for download.

If you use CAT for a long period of time without connecting to the Internet then your credentials will eventually expire. You will need to connect again and go to the CAT installation URL to download an update.

Note: If you have a Desktop Shortcut to CAT and it does not work offline you simply need to delete and recreate it.

3.5. CAT Licence Key

All CAT users are provided with a license key that gives them access to the Clinical Audit Core Product (CACP). The CACP includes all the functionality that is described in this manual.

The license key is generated the first time a user logs in by leaving the license key field blank.

Custom CAT modules may be developed to meet specific user requirements. License keys can be issued to users that provide access to the CACP and the required additional modules.

The license key is updated by entering the new issued license key at the login screen or in the preferences screen.