

# Canning Data Extraction Tool v4.3 Release Notes

## Introduction

The Canning Data Extraction Tool has been designed for installation on computers at general practices. The tool can extract clinical information to produce reports of clinical indicators, as well as lists of patients meeting the criteria required by the indicators.

The only change in this version is the inclusion of the HPV Vaccination indicators. Instructions for accessing this report, and the APCC upload port number, are the only changes to these notes.

## System Requirements

### Operating System:

Windows XP Service Pack 2  
Vista

(Windows 2000 is no longer supported in this version)



### Recommended Minimum Hardware Specifications:

Processor: Pentium 4, 2.8 GHz  
Memory: 1 GB RAM  
Resolution: 800 x 600 pixels (1024 x 768 for APCC)

### Internet Explorer:

Internet Explorer 7 or higher

### Clinical software compatibility:

Medical Director 2  
Medical Director 3  
Medical Spectrum Classic  
MedTech32  
Best Practice  
PractiX

\*\*\* CRITICAL \*\*\*

Each clinical database has its own connectivity requirements. After the tool has been installed, be sure to read the instructions under the “Help” menu for each type of database, especially Best Practice, as a password is required to access Best Practice data.

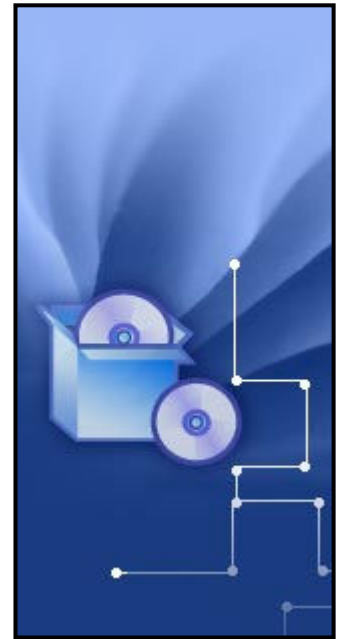
### Data transmission ports:

SMTP e-mail default port: 25  
SMTP e-mail backup port: 465  
FTP (NPS evaluation) port: 21  
Web Services (APCC) port: 80

At least one of the e-mail ports must be open for SMTP e-mails to be sent from within the tool.  
The FTP port must be open for NPS evaluation data to be uploaded.  
The Web Services port must be open for uploading to the APCC web portal.

## **Installation**

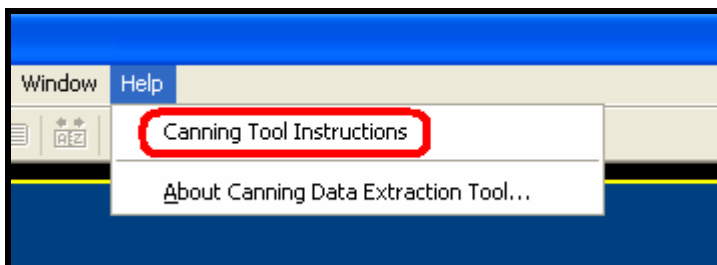
The tool can be installed on any computer that is connected to the server, including the server itself. The recommended installation is on a workstation that is connected to the Internet (in order for the e-mail feature to work). For convenience, regular users will have easy access to the tool if it is installed on their workstation. The tool can be installed on multiple workstations but separate imports will be required. Running the tool on the server may not only be inconvenient but might also slow the network down for all users. If possible, avoid a computer that automatically downloads pathology results as well. To improve performance, close all other applications and let the tool run by itself, without interruptions.



**Terminal Servers** are relatively uncommon in practices but if you are installing the tool at a practice that uses a terminal server, you will need to install the tool on the server. The tool will then be available to users if they have been given user rights to access it. The shortcut can be found via the Start menu and may or may not be available on desktops, depending on how the network is set up. The practice IT support should be able to assist in this matter as this issue is not specific to the Canning Tool. In some circumstances it is possible to install the tool on workstations in a terminal server environment but it would be best to contact the practice IT support and/or our support line for assistance.

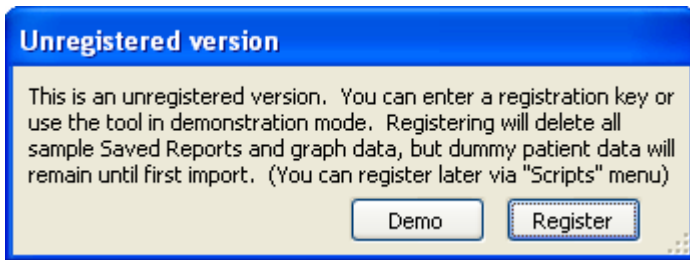
**Previous versions** should not be uninstalled unless the version is v3.1 or older. The new version will overwrite v3.2, v4.0, and v4.1 and v4.2. It will back-up data from these versions during installation. Settings and Saved Tables can be transferred from these older versions once the new version is running (see below).

**Installer File:** The tool is supplied as a single installer file called “CanningExtraction4-3.exe”. Simply double-click this file and follow the prompts. The tool will install quickly and a shortcut will be placed on the desktop. Double-click the shortcut to start the tool. Go to the “Help” menu and select “Canning Tool Instructions” for setup and operation procedures.



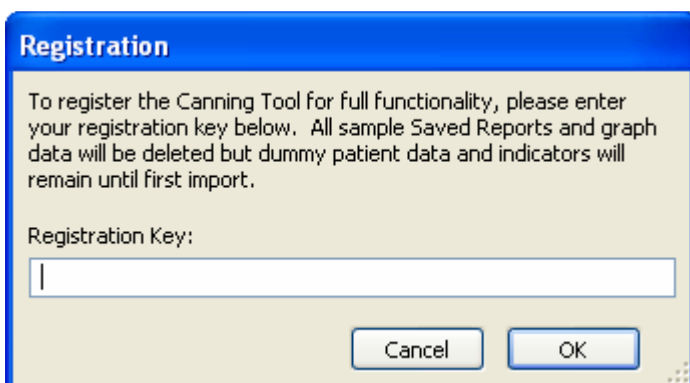
## Startup

The first time the tool is started and after a clinical package button is clicked, a dialogue box will appear advising that the tool is unregistered. The tool contains sample MD2 data which is useful for demonstration and training purposes. This data will be available whether the tool is registered or not. When the tool is registered, the sample data will be deleted during the first import.



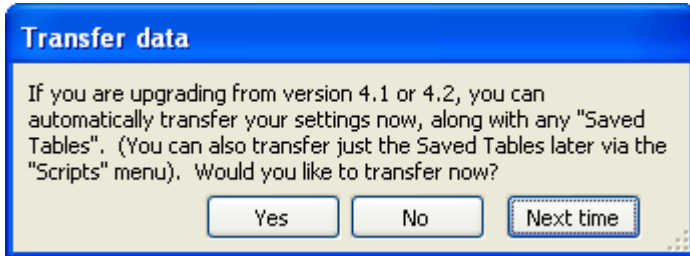
By clicking the "Demo" button, you will be able to access all areas of the tool, however importing is disabled. In demonstration mode the tool also contains 6 dummy saved records which are visible in reports and are used to populate the graphs. This is great for demonstrating the capabilities of the tool to a practice, or during a presentation. When the tool is registered, this data is deleted immediately, ready to save data from the first import of real data. You can use the tool in demonstration mode until you are ready to register. To register later, go to the "Scripts" menu at the top of the screen.

To register the tool, click the "Register" button and enter the registration key provided to the division by Canning.

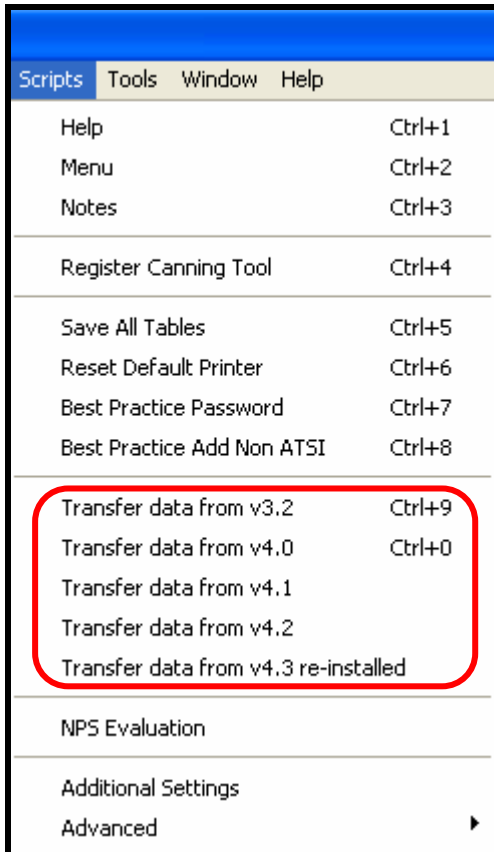


## Upgrading

After registering the tool, you will be asked if you would like to transfer settings and saved tables from the 2 previous versions of this tool (not an earlier one). This process may take anywhere from a few seconds up to a minute. It is recommended this process be performed at this point rather than after the first import.



If the tool cannot find a previous version, a dialogue box will appear advising this. You can also transfer just the saved tables later by going to the “Scripts” menu and selecting “Transfer data from v4.2”. Data can be transferred from earlier versions via this menu as well.



If you need to uninstall and reinstall the current version, any tables saved will be lost unless you make a copy of the tool’s main file prior to uninstalling. The easiest way to do this is to select the file shown below and copy and paste it (Ctrl+c, then Ctrl+v). A copy of the file will automatically be created in the same folder. XP will name this file “Copy of Canning v4-3”. You can now uninstall and reinstall the tool. Follow the process above but select the “Transfer data from v4.3 re-installed” script instead.

**Default location:** C:\Program Files\Canning\Canning Data Extraction Tool

**File name:** Canning v4-3.can

## Operation

The installed tool will originally contain some dummy MD2 sample data which will be overwritten during the first import. To see all the tables available in the tool, select “Medical Director 2” from the first menu. Go to “Settings” and select all tables under the “Table Selections” tab. For the NPS Prescribing Indicators, go to the “NPS” tab and select the first box. Dummy data will be visible in all tables. This dummy data is also useful for demonstrating the tool at the practice before the import is carried out, as it is possible that the real practice data may not be suitable to demonstrate the tool properly.

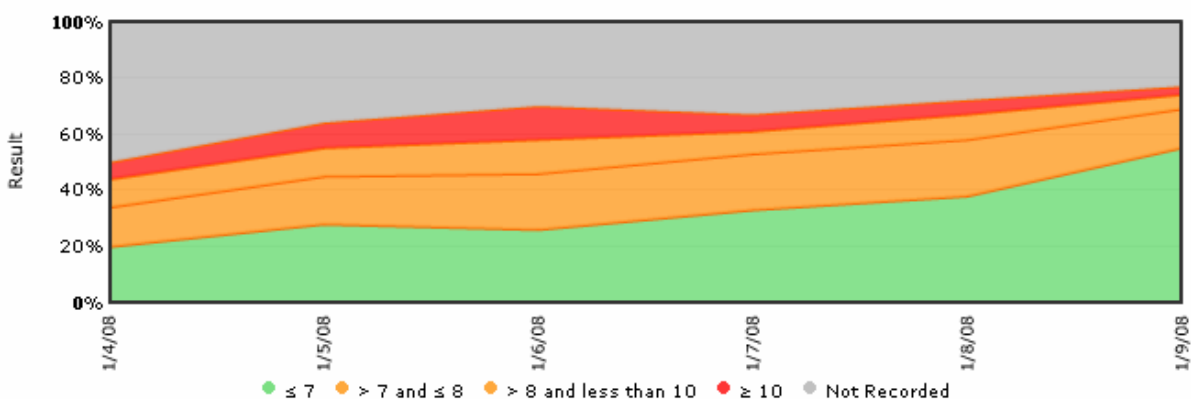
It is critical that you deselect the tables you are not interested in before importing, to cut down the time taken to import the data. The NPS and APCC tables are much slower than all of the other tables, particularly with MD2. When importing data for these tables from MD2 it is recommended that the import be carried out overnight, or at least on a spare computer that will not be in use for an hour or two and potentially longer at a large practice. The import duration will be shown at the bottom of the screen which will assist in determining how much time will be required for the next import. The “APCC General” table imports all active patients in the entire database which slows down the display of the patient lists. Select these tables if you need to but not if you don’t. For your monthly NPS or APCC reports you will need to select all tables in each relevant group.

## Trialling at the division

We recommend not trialling the tool on MD3 unless you are logging in to the “HCN Live Data” database, which is what the tool is searching for. You will need a full MD3 licence to enter data in “HCN Live Data”. If you are using “HCN Sample Data”, the tool will not work. It is possible to use the sample database but you will need to call our support line to change the way the tool links to MD3. We will be creating a little application to allow connection to the sample database when time permits. This will be promoted via the Canning Tool e-mail list.

## Graphs

The graphs in this tool will show trends over time based on the percentages in the tables. At least 2 records must exist for the graphs to appear with lines and be meaningful. To make the graphs appear automatically, the computer must have Internet Explorer version 7 or later installed, even if Internet Explorer is not the default web browser. With older versions of Internet Explorer, the graphs can still be shown but you will need to right-click on the graph and select “Refresh” every time. Graphs will also not print with older versions of Internet Explorer.



**New in v4.3**

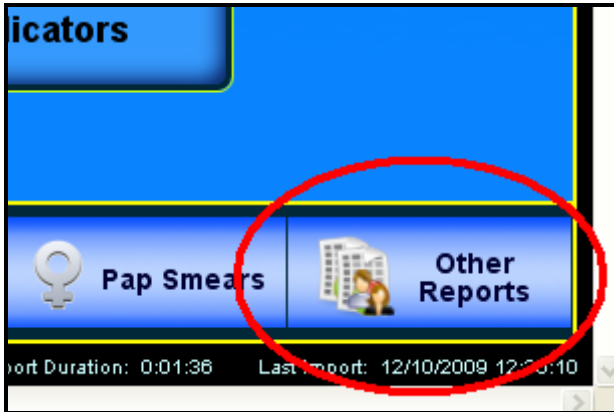


New features:

- HPV Vaccination Module

(Please note that practices participating in the NPS PDGPD project will not be permitted to use v4.3 because it has not been tested by the NPS.)

To access this module, click the “Other Reports” button on the main menu (a tick box is not included in Settings)



Click the “HPV Vaccination” button:



This module requires its own import, so after you’ve checked out the new indicators and patient list using the dummy data, click the “Import” button on the Indicators screen.



Make sure you try the “Filter” on the patient list screen. All the filters in the tool are very handy, so keep an eye out for them on a few of the other patient lists too.

Patient	Age	First Vaccine	1st Dose	2nd Dose	3rd Dose
Billabong, Briony	18	Gardasil	30/5/2009	31/7/2009	
Carmine, Catherine	24	Gardasil	6/7/2009	28/9/2009	
Jefferson, Julia	25	Gardasil	4/3/2009	4/5/2009	

## **New features added to v4.2 (for divisions skipping v4.2)**

### New features:

- The APCC measures have been included in the Canning Tool for the first time. These indicators will work with MD2 and MD3. Other packages will be added soon. After the practice token supplied by the APCC is entered, the tool can upload the measures to the APCC web portal.
- The NPS Prescribing Indicators have been updated to the final specifications, ready for the launch of this major new project in 20 divisions in September 2009.
- The NPS Evaluation module has been added. This is a totally separate module with its own table structure and its own import. De-identified clinical data can be encrypted and uploaded to the NPS secure FTP server in this module. Access is limited to practices participating in the PDGPD Project.
- A new Diabetes BMI table has been added for the GP Connections division in Queensland. This is a comprehensive table that counts adult diabetic patients within a range of BMIs, broken down into gender as well as ATSI status. The patient list also includes the height and weight values that have been used to calculate the BMI. To access this table, click the “Other Reports” button on the main menu.
- A new set of Obesity indicators have been added for the Southern General Practice Network in NSW. These indicators include all patients diagnosed as overweight or with obesity. Indicators include waist circumference, blood pressure, HbA1c, total cholesterol and of course BMI. Height and weight are also shown in the patient list.
- The term “Non-indigenous” is finally available in the “ATSI” field in MD3. The tool can interpret this new term. This term was also added to Best Practice earlier this year. This means the tool can now count “Non-ATSI” patients for all SQL clinical databases.
- New desktop icon showing a medical red cross being sucked out of a computer monitor!
- Hysterectomies are now factored into Pap smears for MD2 and MD3 due to the new APCC measures excluding patients who have had a hysterectomy. The existing NPI indicator still does not factor this in because it is not part of the NPI specifications, however the patient list will highlight the patients who have had a Pap smear. The “Pap Smear” table will also identify patients who have had a Pap smear but will be adjusted to not count these patients in a later version.
- During installation, data from earlier versions of the tool from v3.2 to v4.1 are now backed up, not just the previous version as was the case prior to this version. This may be useful for transferring saved records if a practice has skipped a version.
- A registration system has been introduced where only one copy of the tool is produced and supplied to all divisions. A registration key will be issued to each division when the upgrade is requested. Once the registration key is entered, the tool will have full functionality and will be set up specifically for the division associated with that key. If a key is not entered, the tool can be run in demonstration mode where the “Import” buttons will not function. While this means an additional step is required at installation, it will save the developers days of work producing a version for each division, allowing us to get started on the next version sooner. We will also be able to get the new tool to you quickly.
- A new feature has been included where the user can select a box to make the tool run an “Import & e-mail” at start-up. This could be used in conjunction with “Windows Task Scheduler” (Vista) or “Scheduled Tasks” (XP) where the tool can be set to start at a designated time. The tool can then start the “Import & e-mail” automatically.
- Reduced the font size on NPCC patient list printouts to allow more data to be visible.
- Indicator percentages can now be calculated to the user's choice of decimal places. This setting affects most reports.

### Modifications:

- The new inbuilt e-mailing method introduced in v4.1 has been further enhanced with 3 backup e-mailing methods in case the first one fails, such as if our ISP has an outage or if port 25 is blocked.
- The condition “Angioplasty” has been dropped from the CHD list because it is not specified in the NPS or the APCC indicators.
- The “Conditions” and “Medications” tabs have been removed from Settings due to their limited usefulness. They will be replaced in the next version with a list of readable conditions (not coded) for each indicator and displayed in “Help”.

### **Further assistance**

For further instructions, go to the “Help” menu and select “Canning Tool Instructions”. See the “Setup” and “Operation” sections for detailed instructions. These pages can also be printed. We also have a detailed manual available for download. Please contact us if you would like a copy.

If you still require further assistance, feel free to contact our support by calling 08 9458 0518, or by e-mailing:

[extraction@canningdivision.com.au](mailto:extraction@canningdivision.com.au)



Remote assistance!